

Voluntary Contribution



Voluntary Contribution: Our cost of shipping and handling orders amounts to at least \$30 for each shipment. If you are ordering materials for more than 200 members, please consider increasing your contribution proportionately.

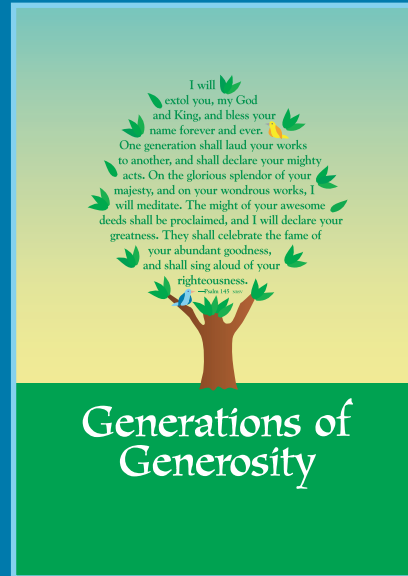
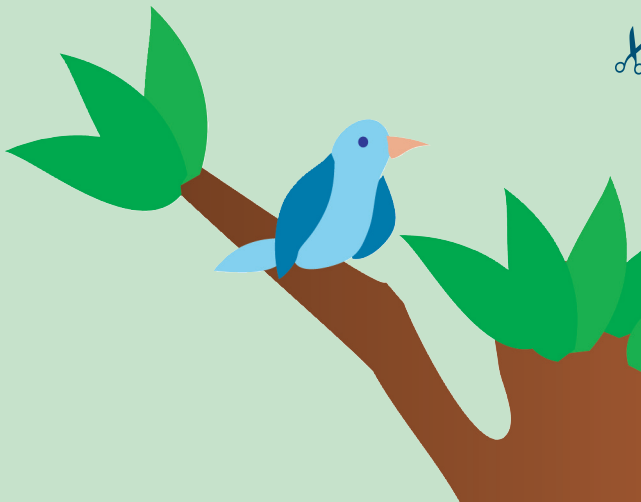
Amount enclosed: \$ _____

We have chosen not to contribute because _____

_____ To save postage and avoid a second mailing, fill this order after Oct. 1, 2005.

_____ Please fill this order (except for Annual Reports Covers) immediately.

Date of our Annual Meeting will be _____



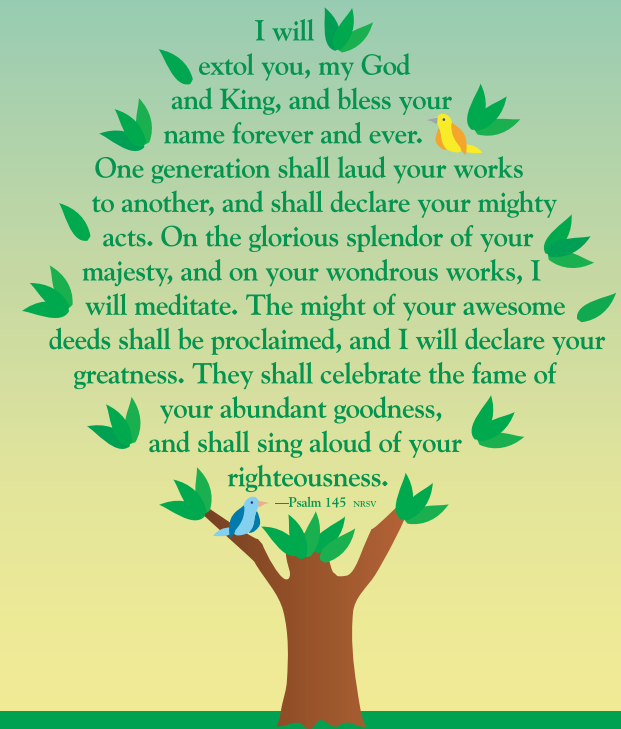
© 2004 Art by Carl Meinke

Stewardship

Evangelical Lutheran Church in Canada
302–393 Portage Avenue, Winnipeg, MB R3B 3H6
Telephone: 204.984.9177
Toll free: 1.888.786.6707 ext 177
Email: orders@elcic.ca
Fax: 204.984.9185

2005–2006

Stewardship Theme Materials from Ecumenical Stewardship Center and the ELCIC



Generations of Generosity

From the ELCIC Stewardship Team to you:

Generations of Generosity

2005–2006 Stewardship Materials for Congregations

One generation shall laud your works to another and shall declare your mighty acts..
Psalm 145:4

This year we recognize a generosity that has its source in God and is shared, not just from one generation to another, but between generations. Children inspire adults. Youth teach their mentors. Older adults dialogue with younger men and women. This year we focus on the stewardship of faith.

Resources

As a part of the ELCIC Stewardship Strategy, tools and resources are available for use in your congregation:

Website: <http://www.elcic.ca/steward/stuff.html>

People: Talented people with experience and a steward's heart can visit your congregation or advise you as you plan. Call your Synod Office.

Giving Magazine: Each year the Ecumenical Stewardship Center publishes an excellent collection of inspirational articles and practical ideas.

This year offers:

- Stories of generosity from older generations;
- The vicious cycle of spending more than we make;
- Spiritual practices to counter consumerism;
- Mentoring youth through intergenerational relationships;
- A litany for commissioning the Budget Committee;
- Serious stewardship with children;
- Storytelling Budgets; and
- Guidelines for a three-week experience of "conversation groups".

Theme Materials: To support the theme, you may also order

- book marks,
- bulletin covers,
- posters,
- Annual Report Covers, and
- ELCIC-produced materials especially designed to echo the theme. Use them as is or borrow ideas from:

Stories from ELCIC stewards

Suggestions for the Children's Message

Bible Study

Intergenerational Event

And more...

ELCIC Commitment Card

Order this on card stock and add a sticker to identify your congregation OR download the file from www.elcic.ca/steward/2004.html and make the changes right on your own computer.

ELCIC Time and Talent Sheet

Available with pre-printed ministry checklist or space to personalize the choices to match your congregation.

Order one copy and print off as many as you need or download from www.elcic.ca/steward/2003.html as a pdf or an edit-ready Word document.

Does your will say anything about your faith?

Does it tell the people reading it what you believed?

Lutheran Planned Giving has a short document with two samples of a faith preamble to a will. Use one, or create your own statement using the document as a guide. 1.888.308.9461 or lpg@worldchat.com

Lutheran Laity Movement for Stewardship-

Canada underwrites the cost of the materials. The only cost to congregations is a \$30 donation to defray the costs of shipping and handling.

2005–2006 Stewardship Order Form

Please Ship To:

Name: _____

Congregation: _____

Address: _____

City/Province/Postal Code: _____

E-mail Address: _____ Telephone: _____

Description of Item	Quantity
---------------------	----------

Giving Magazine Volume 7 (\$7.50 each)	_____
---	-------

Theme Poster (Put them all around your church!)	_____
---	-------

One "RESOURCE SET" to photocopy	_____
---------------------------------	-------

Time/Talent Commitment Sheet Set of 2 (preprinted/space to edit)	_____
--	-------

Bookmark (everyone needs a bookmark!)	_____
--	-------

ELCIC Commitment Card Pre-printed (ready to personalize with a label)	_____
---	-------

Bulletin Cover	_____
-----------------------	-------

2005 Annual Report Covers (Available Oct, 1, 2005)	_____
--	-------

Order by

Mail: Stewardship
Evangelical Lutheran Church in Canada
302-393 Portage Avenue, Winnipeg, MB R3B 3H6
Telephone: 204.984.9177 • Toll free: 1.888.786.6707 ext 177 •
Email: orders@elcic.ca • Fax: 204.984.9185

